

## Glasteel Cooling Tower Panels

Glasteel Cooling Tower Panels (fiberglass reinforced plastic) are designed to withstand the extremely corrosive environments often associated with the cooling tower industry and are engineered specifically for use as louvers, stair enclosures and exterior casing.

**PANEL PRODUCTS**

- Fire-Rated Flame Spread of 25 or less
- Fire-Rated Flame Spread of 50 or less
- General Purpose Non Fire-Rated

**PRODUCT WEIGHTS**

- 8 oz/sf (nominal weight)
- 12 oz/sf (nominal weight)
- 16 oz/sf (nominal weight)

**COLOR**

- Light Grey

**FINISH**

- Embossed Exterior/Interior
- Smooth Exterior/Interior

**APPLICATIONS**

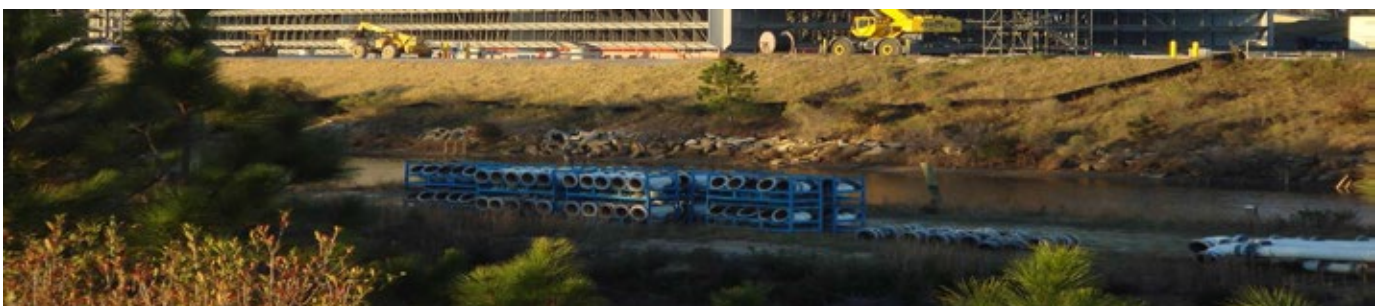
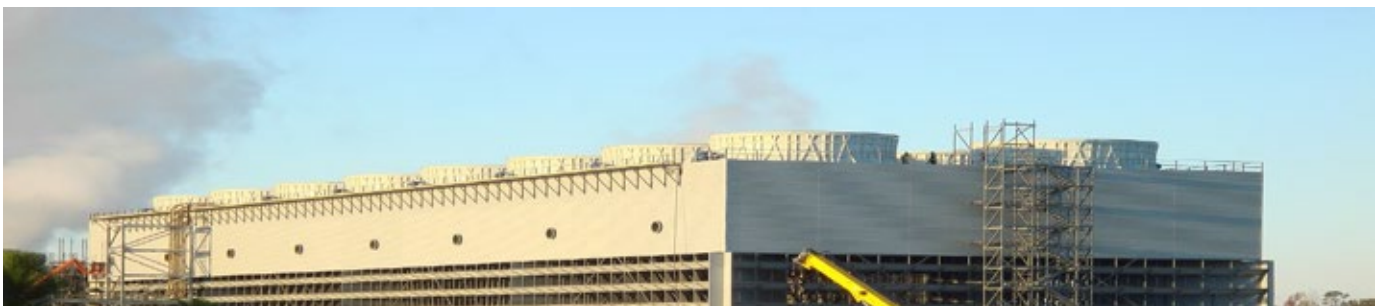
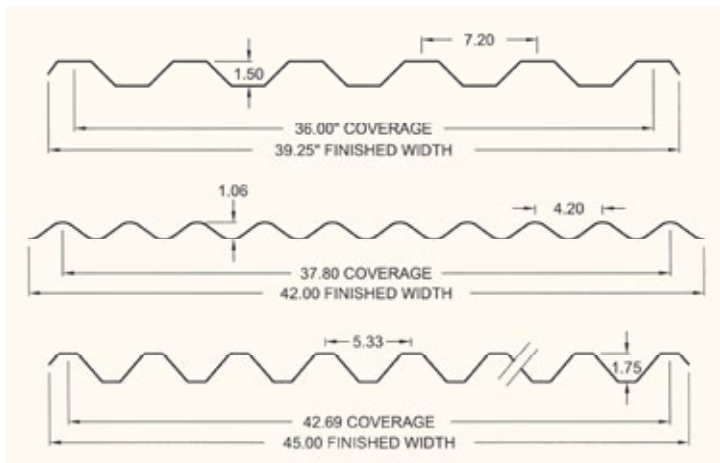
- Counterflow Towers
- Crossflow Towers
- Field Erected Towers
- Factory Assembled Towers
- New & Reconstruction Installations

**All Glasteel Cooling Tower Panels meet or exceed the requirements of:**

- ASTM D-3841 – “Specification for Glass Fiber Reinforced Polyester Plastic Panels”
- CTI Code for Standard Specification, Bulletin STD-131 – “Fiberglass Reinforced Plastic Panels for Application on Industrial Water Cooling Towers”

\*Note: Any numerical flame spread classification referred to in this brochure does not define the hazard presented by this material under actual conditions when large quantities of Glasteel panels are to be used. We recommend that you consult your insurance advisor.

## Glasteel Cooling Tower Panels (Continued)

**STANDARD PROFILE SELECTION****PANEL SPECIFICATION**

- 1) Product shall be Glasteel Cooling Tower Panels as manufactured by Glasteel, a Stabilit America Company, Moscow, TN. 1-800-238-55-46 WWW.GLASTEEL.COM
- 2) The louvers shall be type (8oz/12oz/16oz). The casing shall be type (8oz/12oz/16oz).
- 3) Profile shall be 4.2 x 1-1/16 or 7.2 x 1.5 or 5.33 x 1.75.
- 4) Exterior finish shall be embossed or smooth; Interior finish shall be embossed or smooth; Color shall be light grey
- 5) Finished width shall be 42" or 39.25" or 45" with a coverage of 37.8" or 36" or 42.69" depending on profile selected (See dwgs to left).
- 6) Length shall be \_\_\_\_\_ feet.
- 7) Resin formulation shall be non fire-rated (GP) or fire-rated flame spread 25\* or fire-rated flame spread 50\*

\*\* Load/Span tables and physical properties available upon request.