

## Technical Data

### Fasteners, Sealants, Accessories

#### FASTENER, SEALANTS, ACCESSORIES

Resolite offers a complete line of fasteners, sealants and accessories for use in conjunction with Resolite FRP panels. These items may be ordered with FRP panels or independently. Many items are in stock for quick delivery. Contact Resolite Customer Service for availability.

#### STAINLESS STEEL SELF-TAPPING SCREWS

**Type 'B' point** is used to fasten Resolite panels to steel girts and purlins. These stainless steel fasteners come in various lengths and are 1/4" diameter. The standard fasteners come with a pre-assembled stainless steel backed neoprene washer in 3/4" (.729") diameter. A 5/8" diameter washer is available when required for certain profiles. A 1-1/8" diameter washer, designed for high wind and impact loads is also available. The fasteners are available in 300 series stainless steel. For extreme or unusual corrosion conditions, contact Resolite for special fastener availability.

Type 'B'



14 threads per inch

Type 'A'

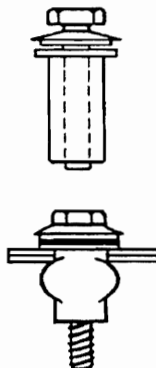


10 threads per inch

**Type 'A' point** is similar to a 'B' point fastener except it is used to fasten Resolite panels to wood framing. The 'A' point can also be used to attach Resolite panels to pultruded FRP structural shapes.

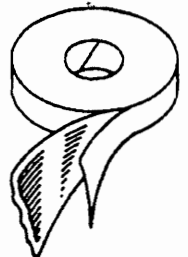
#### SB-2 SIDE LAP FASTENER

The SB-2 is a grommet type fastener used to fasten the side laps between two Resolite panels. They are also used to attach a flashing member to a Resolite panel in an area where there is no structural backing. The SB-2 has a stainless steel hex head machine screw with a neoprene sleeve, 3/8" diameter by 1-1/4" long. As the head is tightened, the grommet expands and provides an effective seal, as well as flexibility, for normal expansion and contraction.



#### BUTYL TAPE

Butyl tape is used to seal the side and end laps on opaque Resolite panels. It has an aggressive tack which assures positive positioning and maximum surface contact. It easily conforms to irregular joint areas and provides a tough durable corrosion resistant seal against ingress of water and dirt. Butyl tape is available in 25 ft. rolls 1/8" thick by 3/8" wide.



#### CLEAR SILICONE SEALANT

This clear sealant is used to seal the side and end laps on translucent Resolite panels. It is permanently pliable with good application characteristics. It is available in an 10 oz. spouted cartridge and coverage is approximately 25 lineal feet per cartridge using a 1/4" bead.



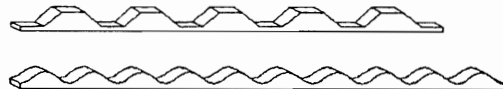
#### CLOSURE STRIPS

To give a better appearance and weather tightness, configured E.P.D.M. composition closure strips are recommended for sealing openings created at such areas as ridges, eaves, door openings, etc. They are available in both horizontal and vertical types for most Resolite profiles.

Vertical



Horizontal



#### FRP FLASHING

Resolite manufactures a complete line of FRP flashing to complement opaque and translucent Resolite FRP panels. Please consult pages 29A, 29B, and 29C for typical details.

# Fasteners, Sealants, Accessories

(continued)

## FASTENER GUIDE

Profile	Application	Fastener to Purlin or Girt	Side Lap Fastener	Sealant Side & End Laps
7.2 x 1.5" 7.2D x 1.75" 7 x 1.5" 7.2 Box Rib	Roofing	Every low flute	12" on center	Butyl Tape - opaque panel Clear Silicone - translucent panel
7 Box Rib 4.2 x 1-1/16" 4-7/8 V-Beam 5.33 V-Beam	Siding	Every low flute	18" on center	Not required unless called for on project drawings or specifications
4 x 1/2" 4 x 1"	Roofing	Every other low	12" on center	Butyl Tape - opaque panel Clear Silicone - translucent panel
	Siding	Every other low	18" on center	Not required unless called for on project drawings or specifications
2-1/2 x 1/2" 2.67 x 7/8"	Roofing	Every other high	12" on center	Butyl Tape - opaque panel Clear Silicone - translucent panel
	Siding	Every other high	18" on center	Not required unless called for on project drawings or specifications
12 x 3" Trafford Tile	Roofing	Two every low (wide flute on support)	12" on center	Butyl Tape - opaque panel Clear Silicone - translucent panel
	Siding	Two every low (wide flute on support)	18" on center	Not required unless called for on project drawings or specifications
6 x 2-1/8"	Deck	Every low	18" on center	Not required unless called for on project drawings or specifications

- NOTES: 1. All roof slopes are a minimum of 1:12. For slopes less than 1:12, contact Resolite Customer Service.  
 2. The minimum end lap for roofing is 6" except for 6 x 2-1/8 deck. Butt ends of deck where possible.  
 3. The minimum end lap for siding is 4".  
 4. A #14 fastener with standard 3/4" (.729") diameter washer is used on all profiles except the following profiles which require a 5/8" washer: 4.2 x 1-1/16, 4-7/8 V-beam, 2-1/2 x 1/2" and 2.67 x 7/8" profiles.  
 5. For fastening guidelines for unusual or extreme loading conditions, contact Resolite Customer Service.