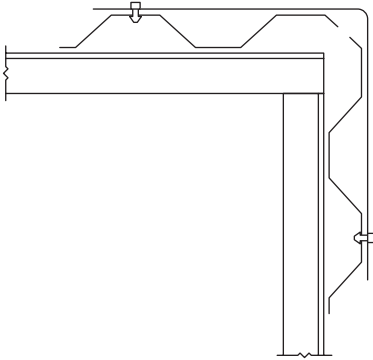




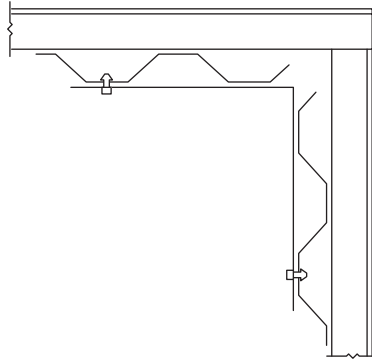
# STANDARD FLASHING DETAILS

---

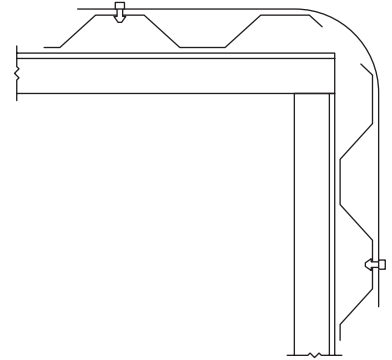
Outside 90° Flash



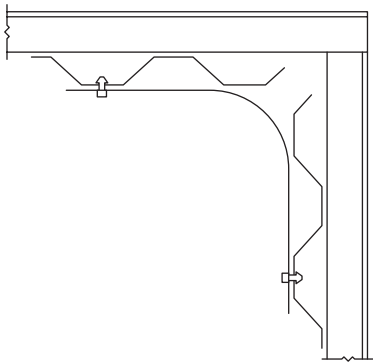
Inside 90° Flash



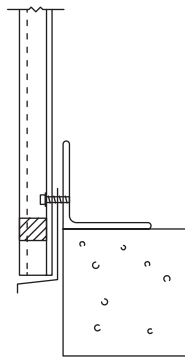
Outside Corner Roll



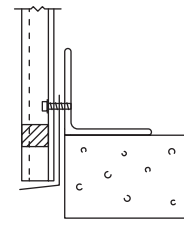
Inside Corner Roll



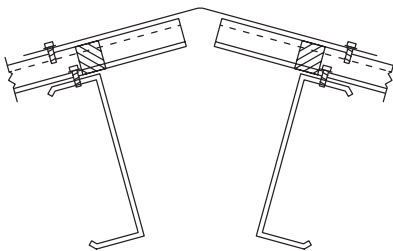
Base Flash (or Head Flash)



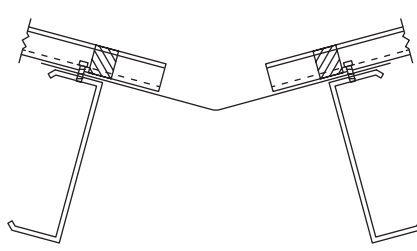
Alternate Base Flash (for non-standard or custom colors)



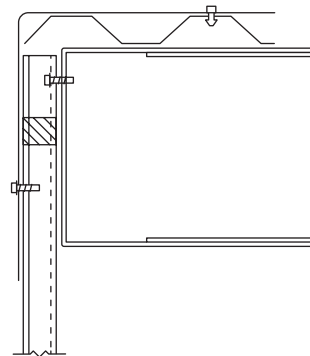
Ridge Cap



Valley Flash



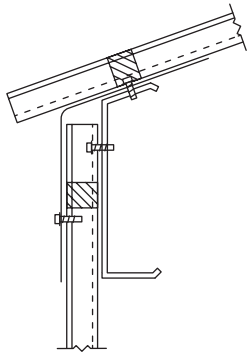
Gable Flash



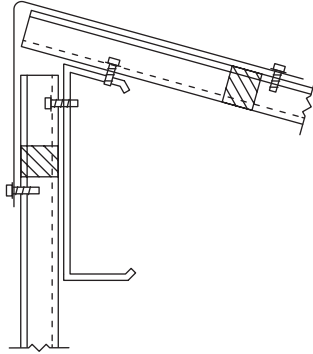
**Notes**

1. Standard length of all flashing is 10'-0".
2. All flashings are nominal 12 oz. per sq. ft.
3. Flashing should be fastened a maximum of 12" on center. Use SB-2 fasteners for attaching FRP flashing to FRP panels. Provide caulking as required.
4. All flashings are furnished with embossed exterior finish.
5. When ordering flashing, specify degree of flashing angle (i.e. 90°, 45°, etc.).
6. Contact Resolute Customer Service Department for availability of other flashing shapes and sizes.

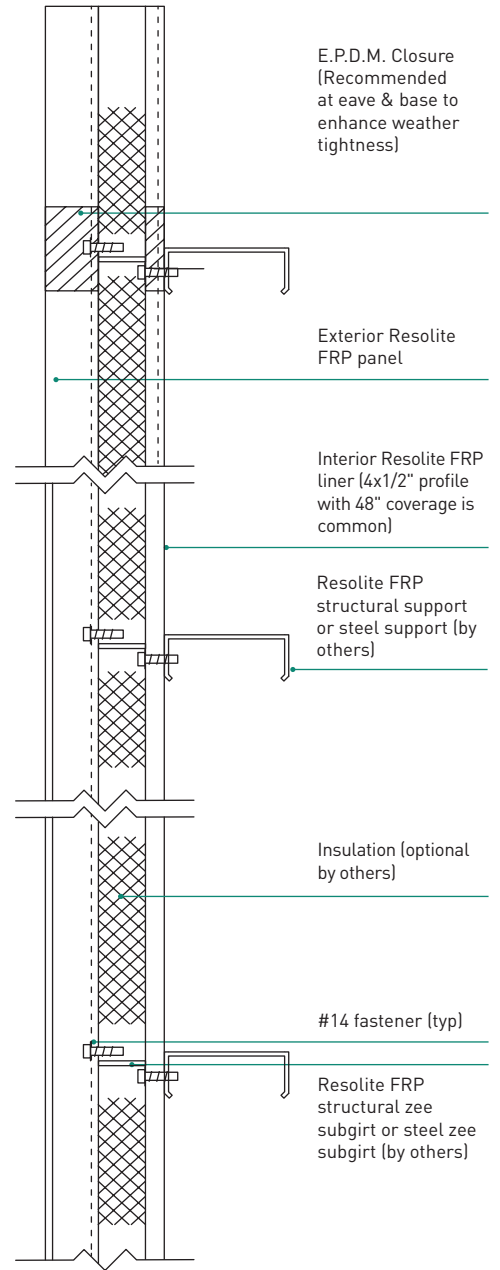
### Eave Flash



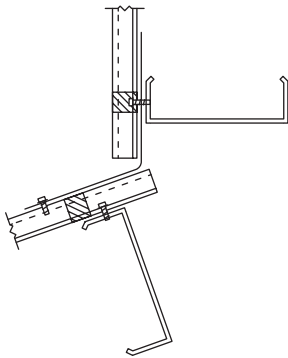
### Peak Flash



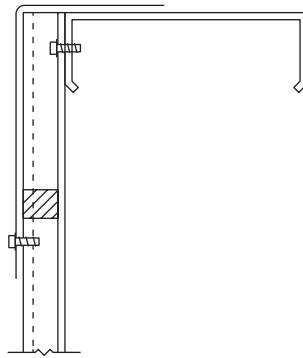
### Field Insulated Double Panel Construction



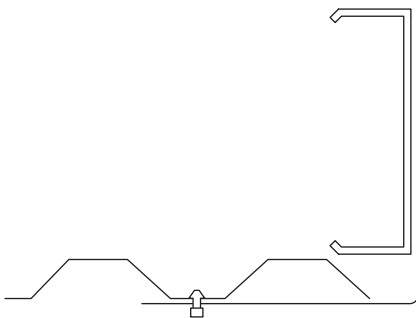
### Transition (Headwall) Flash



### Sill Flash



### Jamb Flash



#### Notes

1. Standard length of all flashing is 10'0".
2. All flashings are nominal 12 oz. per sq. ft.
3. Flashing should be fastened a maximum of 12" on center. Use SB-2 fasteners for attaching FRP flashing to FRP panels. Provide caulking as required.
4. All flashings are furnished with embossed exterior finish.
5. When ordering flashing, specify degree of flashing angle (Le. 90°, 45°, etc.).
6. Contact Resolite Customer Service Department for availability of other flashing shapes and sizes.