

Ventilation in Corrosive Atmospheres

Resolite's ResoFLO FRP ventilation systems are designed to withstand the extremely corrosive environments often associated with pulp and paper mills, chemical plants, steel mills, metal treatment facilities, chlorine cell buildings, and wastewater treatment plants. Operating conditions at these types of industrial sites typically include the three deadly threats to building components: excess heat, moisture and corrosive gases, liquids and particulates. Working together, they can quickly destroy ordinary ventilation system components and impair critical production processes. Fiberglass reinforced polymer materials, with their excellent resistance to corrosive atmospheres, can substantially increase the ventilators service life.

Series RFVS Gravity Ventilators

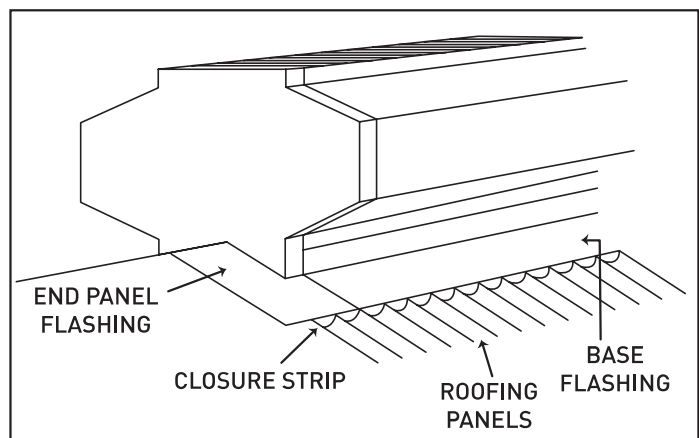
ResoFLO continuous ridge ventilators, employing corrosion-resistant FRP components, are designed to produce maximum gravity airflow under a wide range of adverse operating conditions. Internal baffles and the outside windband effectively seal out the elements and prevent backdrafts. Continuous weep openings on each side of the windband provide ample drainage for even large volumes of rainwater and melted snow. Special corrosion resistant bearings permit optional manual chain or motor-driven dampers to always operate freely, even in the most corrosive industrial environments.

RFVS ventilator units are shipped completely assembled and ready for installation in 10-foot sections, which may be linked together with splice plates to provide continuous runs of any length. The hi-efficiency design of ResoFLO FRP gravity ventilator systems offers substantial savings in ventilation costs compared to power ventilators. ResoFLO gravity ventilators operate efficiently requiring virtually no maintenance expense.

Proven FRP Resin System

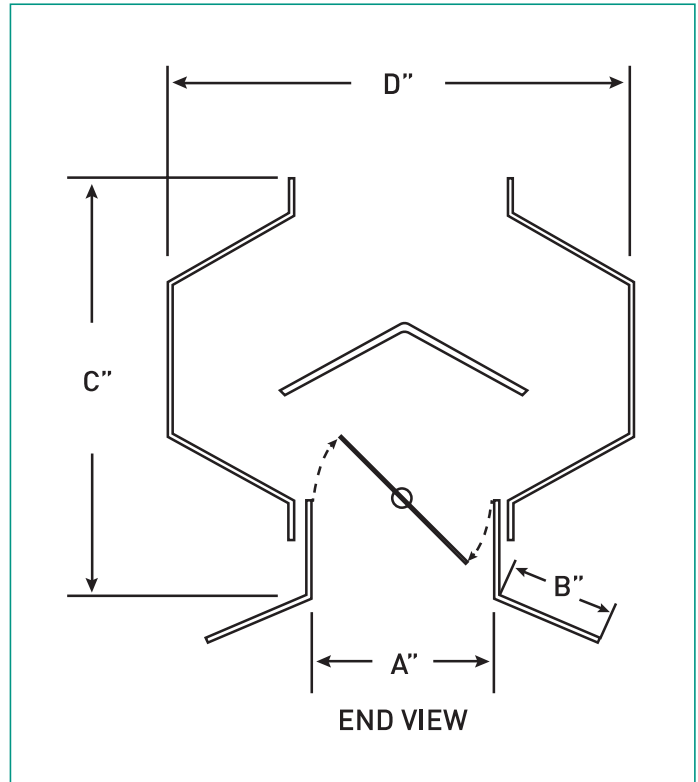
Resin is the heart of all fiberglass reinforced polymer materials. That's why Resolite chose the same family of light-stabilized resins for ResoFLO ventilators that are utilized in manufacturing its well-known corrosion resistant FS25A I CRFS25A and high-strength Tred-Safe FRP wall and roof panels. Adjustable louver, model ABRK6 45°/90°

STANDARD FEATURES	
Construction	Hetron 99P® isophthalic polyester resin with a flame spread of 25* or less, UV stabilizers
Hardware	304 stainless steel
Vent Length	Standard 10' modules
En Cap	Two (2) per run
Base	Self flashing ridge mount
Color	Stone White, Gray or Beige
Throat	4 sizes: 9", 12", 18", 24"
OPTIONAL FEATURES	
Hardware	316 stainless steel
Damper	Manual chain or motor driven
Bird Screen	1/2" polyethylene mesh
Base	Curb mount
Special resin	[Minimum quantity requirements]
Special color	[Minimum quantity requirements]



Specification

1. Continuous ridge , ventilators shall be ResoFLO fiberglass reinforced polymer ventilators Series RFVS as supplied by Resolite, Stabilit America
2. Construction of the components shall be a minimum of 0.10,. nominal thickness. Glass content shall be approximately 40% by weight.
3. Resin shall be high quality isophthalic halogenated polyester equivalent to Hetron ggp® having a flame spread of 25* or less. Additional protection shall be provided with the use of UV stabilizers.
4. Hardware shall be 304SS (316SS optional)
5. Finish shall be smooth.
6. Color shall be _____ Gray Frame w/ Stone White Blades as standard.
7. Free area of the exhaust opening shall be equal to or greater than the ventilator throat size.
8. If required, the damper shall be one piece center pivot with corrosion resistant bearings and shall be _____ (manual chain operated or motor driven).
9. If required, furnish bird screen consisting of 1/2" polypropylene mesh.



VENTILATOR DIMENSIONS

MODEL	A"	B"	C"	D"	NOMINAL THICKNESS
RFVS-9	9"	6"	16"	21"	0.10"
RFVS-12	12"	6"	20"	28"	0.10"
RFVS-18	18"	6"	31"	40"	0.12"
RFVS-24	24"	6"	36"	54"	0.12"

*Resolite advises that the numerical flame spread classification is not intended to reflect hazards presented by this or any other material under actual fire conditions.

The information contained herein is not intended to be used for design purposes. Resolite reserves the right to change or withdraw such information, or the designs and details of the products upon which it is based, either wholly or in any portion thereof, without further notice. Specific information required for design and detailing of specific jobs is available upon request from Resolite Customer Service.

Color Notice - Polyester resin products are subject to discoloration when exposed to atmosphere and environmental conditions. Accordingly, seller assumes no liability and expressly disclaims any responsibility for any loss or damage, direct, indirect, or consequential; or for any change of color for any polyester resin product.